



# PT GUNANUSA UTAMA FABRICATORS



Company Profile  
Ed. Apr 2022



# PT GUNANUSA UTAMA FABRICATORS

provides project management, engineering, procurement, fabrication, construction, installation, hook-up and commissioning services for both offshore and onshore projects in oil and gas as well as other heavy engineering structures.

Founded in 1980, Gunanusa commenced operations in 1983. Since then, it has secured work not only from the Indonesian market but also from overseas such as Thailand, India, Myanmar, Brunei and USA.

Gunanusa has been certified ISO 9001:2015 for quality management system, ISO 45001:2018 and SMK3 for health, safety and welfare management system and ISO 14001:2015 for environmental management system.





# ENGINEERING

The core of Gunanusa engineering team is a group of senior engineers from various disciplines (structural, piping, mechanical, electrical and instrumentation) with at least 10 years experience in oil and gas offshore and onshore field.

During the bidding stage, the engineering team supports the bidding team by preparing Materials Take Off / Bill of Materials and Materials Requisition (RFQ), as well as by providing technical review of the project specification.

The construction engineering team at Gunanusa yard performs the preparation of fabrication and construction drawings which provide the base for fabrication work.

For load-out activities, the engineering team undertakes structural and ballasting calculations to ensure the smooth and safe operation.

For detail engineering, we are supported by well known and reputable engineering firms who have worked with us for many years.

Gunanusa utilizes a number of engineering software namely SACS (structure), Caesar (piping), PDMS, PV Elite (pressure vessel),



Finglow (pressure vessel), Autocad LT 2018 (Drawing 2D), Autocad LT Mech. 2018 (Drawing Mechanical), Autocad 2018 Full 3D (Drawing 3D), PIMS (Precommissioning), Staad Pro Connect Edision (structure), Nozzle, Traceability System (Document Management System), SCIA (structure), Finglow (pressure vessel).

We also have a comprehensive engineering library for documentation of engineering references like procedures, standards, drawings and etc for speed up the engineering process. .





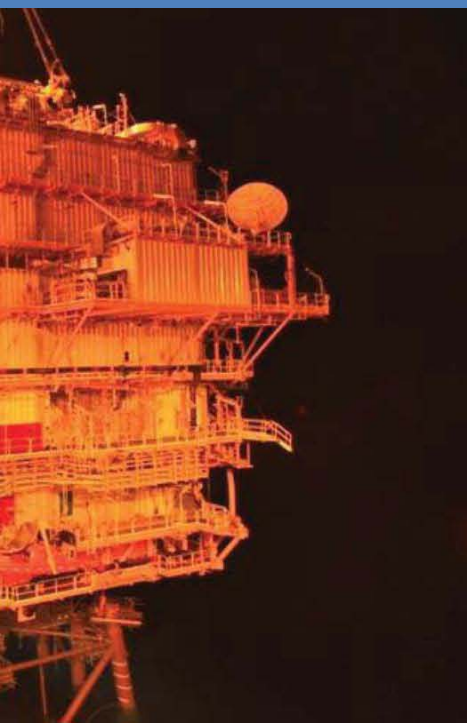


# PROCUREMENT

Procurement department ensures the material purchase, timely delivery of materials and information between vendors and projects, including shipping arrangement, custom clearance, materials handling activities, local/inland transport and ware-house storage. Procurement engineering also provides technical backup for materials and equipment package to meet clients' requirements and project specifications.

Gunanusa synchronizes its supply chain management by using its own Enterprise Resource Planning (ERP) software (Microsoft Dynamic Axapta), which coordinates and provides real-time information to monitor schedule, materials take-off, purchase requisitions and warehouse inventory.

To monitor the progress of overseas procurement, we use the services of the International third party inspection companies, such as Moody International (Asia), DNV, Lloyd Register to ensure that all the procured items meet project specifications





# FABRICATION & CONSTRUCTION

Gunanusa's reputation in the oil and gas field is built by years of fabrication experience, delivering more than 100 offshore platforms, also completed and delivered a number of onshore plants on turnkey basis to customer in Indonesia.

Nearly all of the structures are built at Gunanusa own fabrication yard, located 120 km west of Jakarta. The yard occupies an area of 18 ha with an 800 m water front to accommodate two jetties, each with 10,000 ton load out capabilities.

Every structure build at our fabrication yard is custom fabricated by dedicated engineers determined to do their best to fulfill customers needs and schedule.

The Javanese tradition heritage in fine craftsmanship manifested in our platform building which confirm to the highest international standards. The same skills and attention to details commonly found in Javanese craft and architecture are now applied to the fabrication of oil and gas platforms using modern materials like Duplex Stainless steel, Fiber-reinforced epoxies and other exotic modern materials.

From material received to material identification, from shop drawing to structural works, from erection and assembly to commissioning our engineers and technicians are working hard to ensure that we deliver in accordance with specification requirements and on the agreed schedule to our customers.





Gunanusa Yard is Custom Bonded area where oversea vendors/clients can deliver the material directly to the yard and do the clear customs formalities therein.

Gunanusa yard is a fully equipped fabrication facility, with proven track records of delivery of 25,000 tones of various modular fabricated structures and have had 6,500 personnel working at peak period.

A dedicated workshop for welding of exotic materials like stainless steel, duplex, super duplex and CuNi complements the yard facilities along with assembly and erection areas, and a welding school (for training and certification).

The yard has several heavy duty vehicles and equipment, 8 to 250 tones cranes (overhead, cherry picker, crawler crane), welding machines, air compressors, generators, trailers, forklift, winches, tools, etc.



# Fabrication Yard

## Fabrication Yard Facility

Total Area:	178,000 SQM
Annual Production:	20,000 ton
Office Area:	2,000 m2
Bearing Capacity:	37 MT/SQM (Average)
Workshop Area:	12,000 m2
Painting Area:	8,000 m2
Automatic Blasting Painting Chamber with Dehumidifier	<ul style="list-style-type: none"><li>2 sets of 25m x 20m = 1,000 m<sup>2</sup></li><li>2 units Gantry Crane 10 Tons</li></ul>
Major Fabrication Facilities & Heavy Lifting Equipment	<ul style="list-style-type: none"><li>Crawler Crane 150 MT</li><li>Crawler Crane 250 MT</li><li>Crawler Crane 280 MT</li><li>Rough Terrain Crane 45MT</li><li>Rough Terrain Crane 70MT</li><li>Man-lift 3 pax</li><li>CNC Tubular Cuts Machine (HGG)</li><li>CNC Plate Cutting Machine 150 MM Thickness (ESAB)</li><li>3 Units of Bending Roll Machines<ul style="list-style-type: none"><li>No. 1 Thickness 48mm x 3 m</li><li>No. 2 Thickness 25mm x 3 m</li><li>No. 3 Thickness 70mm x 3 m</li></ul></li></ul>
Power Sources (Grid Line PLN)	1,730 Kva
Generators:	1,625 Kva
Emergency Generators:	2 x 500 Kva, 1 x 550 Kva 1 x 200 Kva, 1 x 150 Kva

## Storage Capacity

Warehouse	2,500 m2
Open Storage	40,000 m2
Air condition closed warehouse	275 m2
Equipment Storage	53 m x 19 m

Gunanusa Yard is certified as Bonded Zone from Indonesian Government

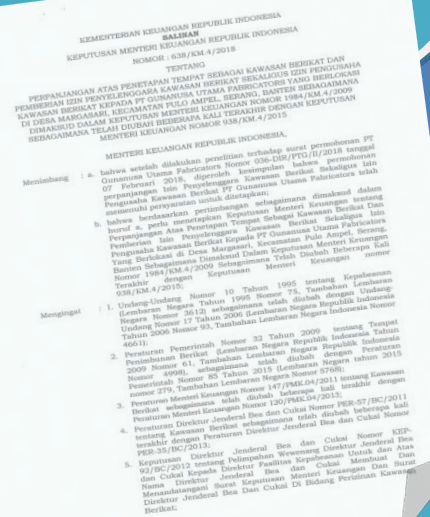
a bonded zone

which allows oversea vendors to deliver materials directly to the yard and clear customs formalities therein.

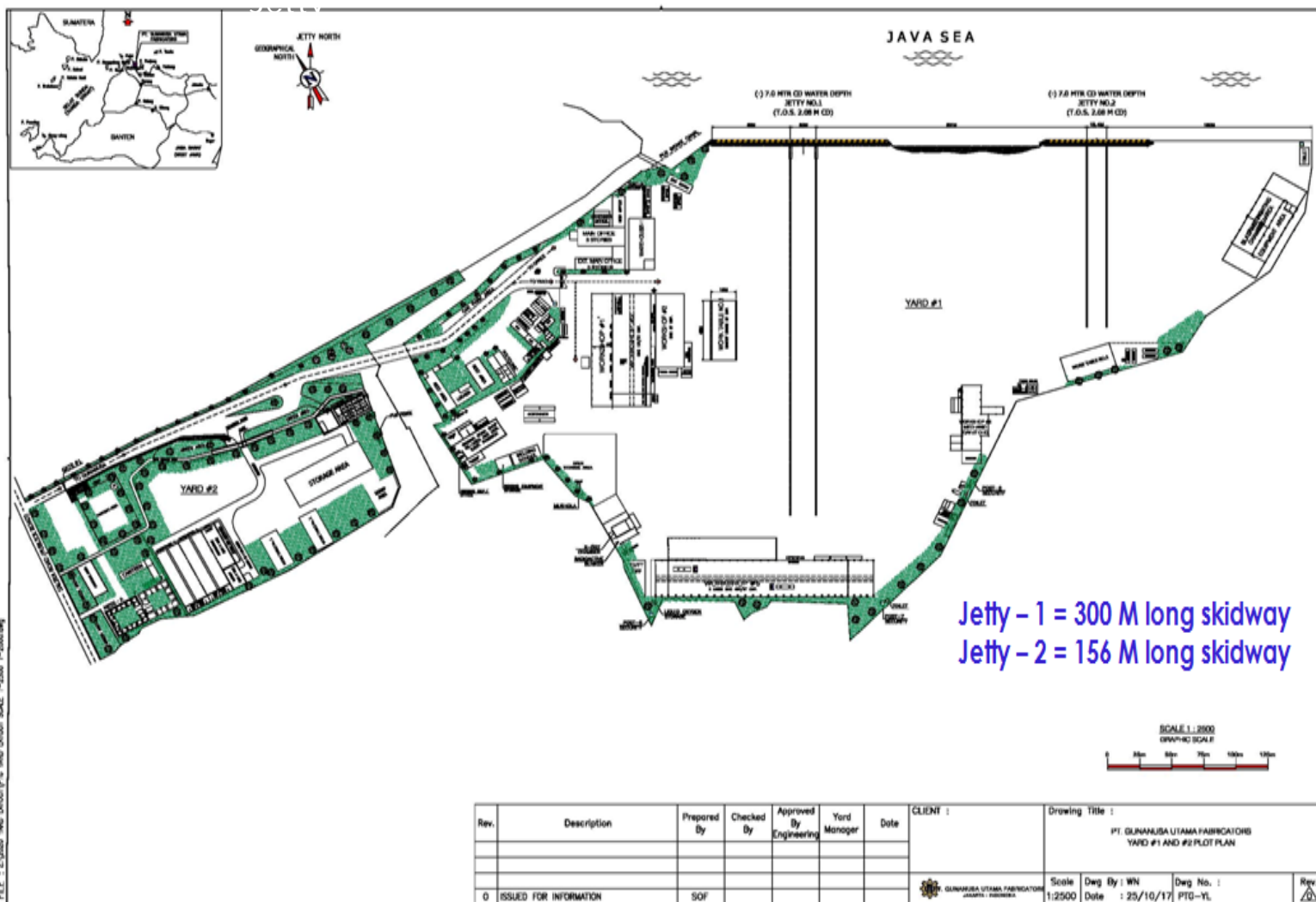
## Jetty

Jetty I		Jetty II
10,000	Module Weight (ton)	10,000
300	Skid Way Length (m)	153
7.5	Water Depth (m)	7
250	Single Point Load	250
550	Skid way (ton/m)	550
	Jetty tyip (ton/m)	
1.2	Tide Variation (m)	1.2

Water front 800m



# Fabrication Yard Layout



Jetty - 1 = 300 M long skidway  
 Jetty - 2 = 156 M long skidway



# INSTALLATION & HOOK-UP

Our experienced engineers is capable of performing offshore and onshore hook up and installation, supported by versatile marine spreads, equipment, tools, consumables, utilities and other resources required for site work.

For shallow water installation, Gunanusa uses the float over method. The barge, with full-loaded deck, is positioned above the site and lowered by using high capacity ballast pumps and taking advantage of local tide.

For open sea installation Gunanusa would cooperate with Client approved offshore installation company. Through years of working at the customers' premise, Gunanusa has become very adept in the hook-up process.





# PRE-COMMISSIONING & COMMISSIONING



Our team are specialized to perform pre-commissioning/commissioning activities such as megger and continuity test, hydro-test, dielectric test, valve functional, leak test, gauge and transmitter calibration, safety valve test, cold and hot loop check, system functional test (with assistance from control system sub-contractor) and mechanical equipment running test. test and up to Compressor running test and string test.

Pre-commissioning, Commissioning activities and start up activities will directly influence the ultimate success of an entire project.

Proper knowledge, planning, qualified personnel, experience are the keys to avoid delays, cost overrun and potential safety hazards.

Gunanusa continuously enhance our Pre-commissioning and Commissioning Personnel knowledge and skills, they are trained to operate all kinds of Pre-commissioning /Commissioning tools and equipment.

Gunanusa has a dedicated team to perform pre-commissioning, commissioning and assist for start up. They work closely with design engineers, construction and field engineers to develop effective, safe and efficient start-up plan for offshore or onshore project.

Our team will be on site to coordinate and perform all pre-commissioning/commissioning based on the plan.





# HEALTH, SAFETY, ENVIRONMENT

## *Gunanusa Safety Objectives:*

- No Fatality
- No major accident
- No Major Fire
- No Explosion

Safety is paramount for Gunanusa way of life. The value of safety is ingrained in Gunanusa workforce, through regular induction, tool box meeting, safety courses and in house training.

The application of these principles is monitor by HSE and all workers in generals through SHOC.





Safety inspectors inspect project area and activities on a regular basis. For example, scaffolding, the inspection is conducted weekly, certified scaffolding inspectors properly inspected and identified scaffolding that are not suitable for construction. For other equipment, like cranes, riggings, electrical, compressor, inspection is conducted on a monthly basis by certified safety inspector with Client Representative where appropriate.

Gunanusa also has procedures in place for reporting and investigation of hazards, risk assessments, and accident including near misses. All incidents are recorded and reported to the management for the purpose of lessons learnt and to develop follow-up actions.

## LTI

stands for Lost Time Incident. It is an industry measurement, based a worker not having lost a day work due to work related incident.

**SSHE CAMPAIGN : HEAVY & CRITICAL LIFTING**

**Lakukan Go-No-Go List Sebelum Pengangkatan Berat dan Kritis**  
 Apply Go-No-Go List Before Heavy & Critical Lifting

**Periksa dan pastikan semua persyaratan keselamatan terpenuhi sesuai checklist**  
 Check and ensure all safety requirements in the checklist are implemented

**GO NO GO checklist**

**Zantika Development Project Phase 1C - Rev 0**  
 To be updated for each Phase of work between PTTEP and PTG

Work Description: Lifting Beam  
 Schedule Commence:

No	Activity	Responsibility	Status	Comment
1	A. Preparation			
1.1	Documents administration, Company (PTTEP)	PTG		
1.2	Approved ISA for heavy lifting of beam and to be briefed to the team	PTG		Lifting plan approved by ISA approved & signed
	to be briefed to the team	PTG		
	to be briefed to the team	PTG		
	to be briefed to the team	PTG		

# PGN SAKA EPCIC Services for Sidayu Wellhead Platforms



## *selected experience*

On December 31<sup>st</sup> 2019, Gunanusa with its consortium partner PT Hafar Daya Konstruksi, was awarded the contract for the EPCI Services for Sidayu Wellhead Platforms and Pipelines from PGN SAKA.

The scope of the project is Detail Engineering, Procurement, Construction, Installation, Hook-up & Commissioning of 2 (two) Wellhead Platform (WHP-C and WHP-D) and Pipelines.

The total weight of platform as follows :

- 2 (two) Wellhead Platforms (WHP-C and WHP-D) consist of 956 Ton Topsides with 553 Ton Jackets which including 528 Ton Piles.
- Pipeline 6" & 12" for 2.5 KM and Modification

The project is expected to be completed by December 2021.





# WASKITA ACSET - KSO

## Fabrication of Steel Bridges Becakayu 2A Ujung



### *selected experience*

On 25<sup>th</sup> June 2019 Gunanusa received the Contract or SPK from Waskita-Acset KSO for Fabrication of Steel Bridges Becakayu 2A Ujung.

Gunanusa Scope of Work in this Project including Tekla Modeling, Procurement, Fabrication and Erection of Bridge for Ahmad Yani (Span 53+100+60 meter) and Hasibuan (80 meter) of SB-Arch Girders.

This Project is completed in March 2021.





# WASKITA ACSET - KSO Fabrication and Site Erection of Steel Box Girder Toll Road Jakarta- Cikampek II (Elevated)



## *selected experience*

In 21<sup>st</sup> November 2018 Gunanusa received the Contract or SPK from Waskita-Acset KSO for Fabrication and Site Erection Long Span Girder above Grand Wisata Bridge and part of Jakarta Cikampek ( Japek ) 2 Elevated Toll Road Project.

Total length of Long Span Girder is 240 m consist of 3 part : 70 m - 100 m - 70 m . Design I girder with high 4,5 m and average weight per girder 30 Ton.

Total erection weight of Long Span Girder is 3.160 Tonnage.





## *selected experience*

On 14<sup>th</sup> December 2018, Gunanusa received the Contract from Mitsui Engineering & Shipbuilding Co. Ltd. for Fabrication of Cooling Water Pipes.

Gunanusa Scope of Work includes Pipe Fabrication, Pipe Erection & Installation of Cooling Water Pipe 4.2m x 3km in segments 39 meter, 36 meter, 10 meter, 5 meter.

This Project is still on going and the completion is expected by September 2021.





# ZAWTIKA FIELD DEVELOPMENT PROJECT PHASE 1C EPCI OF WHP, ASSOCIATED PIPELINE & TIE-IN

*selected experience*



On May 4th, 2016, Gunanusa was awarded the contract for the ZAWTIKA FIELD DEVELOPMENT PROJECT PHASE 1C, EPCI OF WHP, ASSOCIATED PIPELINE & TIE-IN from PTTEP as Thailand's national oil & gas company

This project consist of 2 (two) LOT's with the scope of project is Detail Engineering, Procurement, Construction, Installation, Hook-up & Commissioning of 2 (two) Wellhead Platforms (WP8 and WP9) as LOT-1 and 2 (two) Wellhead Platforms (WP10 and WP11) as LOT-2

The total weight of platform as follows :

- LOT-1 consist of 2 (two) Wellhead Platforms (WP.8 and WP.9) with 3246 Ton Topsides and 13120 Ton Jackets which including 2 (two) Associated Pipelines (IP8 :18"Ø -22 KM and IP9 14"Ø-10 KM), One (1) Pipeline and Manifold (IP2 PLEM), Brownfield Modification and Tie-in to Existing Platforms
- LOT-2 consist of 2 (two) Wellhead Platforms (WP.10 and WP.11) with 3246 Ton Topsides and 13100 Ton Jackets which including 2 (two) Associated Pipelines (IP10 :18"Ø -5.6 KM and IP11 18"Ø-15.3 KM), One (1) Pipeline and Manifold (IP2 PLEM)



The platforms were installed at Gulf of Moattama, 300 km South of Yangon, Myanmar in May, 2018



ZAWTIKA FIELD DEVELOPMENT PROJECT PHASE 1C  
JACKET INSTALLATION



selected experience



# PERTAMINA HULU ENERGI (PHE) WEST MADURA OFFSHORE (WMO) EPCI-1 SERVICE CONTRACT for PHE- 12, PHE-24 and CPP2 Platforms and Pipeline.

selected experience

On August 24th, 2015, Gunanusa with its consortium partner TIMAS Suplindo, an Indonesian installation company, was awarded the contract for the PERTAMINA HULU ENERGI (PHE), WEST MADURA OFFSHORE (WMO) - EPCI-1 SERVICE CONTRACT, Indonesia's national oil & gas company

The scope of the project is Detail Engineering, Procurement, Construction, Installation, Hook-up & Commissioning of 2 (two) Wellhead Platform (PHE-12 and PHE-24), 1 (one) Central Process Platform (CPP-2), Bridges, Pipelines and KE5 Brownfield Modification.

The total weight of platform as follows :

- 2 (two) Wellhead Platforms (PHE-12 and PHE-24) consist of 795 Ton Topsides with 916 Ton Jackets which including 528 Ton Piles.
- 1 (one) Central Process Platform (CPP-2) consist of 2500 Ton Deck with 1200 Ton Jacket which including 1240 Ton Piles
- 1 (one) Bridges with 50 Ton
- 12 KM pipelines.

The platforms were installed at West Madura Offshore, East Java, Indonesia in December, 2017





# YADANA FIELD DEVELOPMENT PROJECT EPSCC.1 and EPSC.2 FP2 AND QP2 PLATFORMS AND BROWNFIELD MODIFICATIONS ON EXISTING PLATFORMS

selected experience



In July and September, 2012, Gunanusa was awarded the contract for the Yadana Field Development Project EPSCC1 and EPSC.2 from Total E&P Myanmar as Myanmar's national oil & gas Company.

The scope of project is Detail Engineering, Procurement, Supply, Construction and Commissioning, of FP2 and QP2 Platform and Engineering, Procurement, Supply and Construction of Brownfield Modification On Existing Platforms.

The total weight of platform as follows:

- QP2 Topsides 1500 Ton.
- QP2 Jacket 1800 Ton.
- Piles 2600 Ton.

# ONGC ICP-R

In May 29th, 2009, Gunanusa with its joint venture partner AFCONS, an Indian construction company, was awarded the contract for the ICP-R Platform from ONGC (Oil and Natural Gas Company), India's national oil company.

The scope of the project is Detail Engineering, Procurement, Construction, Commissioning, and Offshore Installation of the ICP-R process platform and jacket, including a bridge to the nearby ICP platform, and Flare Tripod. The total weight of the platform is 10,000 ton, with the jacket is 5800 ton.

ICP-R platform is modularized into five modules to facilitate transport and installation which are:

1. Main Support Frame
2. Building Module
3. Process Gas Compressor
4. Separator Module
5. Turbine Generator

The platform is installed at Mumbai High North in March 2011.

## string test

String test of turbo compressor trains are normally carried out in a controlled factory environment. The String Test was carried out in the fabrication yard to simulate actual operation condition when the modules are finally installed.

Gunanusa tackled this very tough challenge splendidly.

**Safety Record:**  
**4.8 million hours without**  
**LTI**

**selected experience**







ONGC Building Module  
heading to barge using  
multi wheel transporter



ONGC - INDIA ICP-R  
"Installed" 2011



# Total's Tunu Development



Total Indonesia E&P operates the Tunu gas and condensate field in East Kalimantan on the outer margin of the Mahakam delta with an average water depth of 8 m. Total has awarded Gunanusa to perform Engineering, Procurement, Construction and Installation. For phase 11, the project consists of 2 platforms, South Manifold Platform (SMP) and South Compression Platform (SCP). SMP, weighing 2700 ton, consists of deck, Middle Pressure Manifold with pig launcher and pig receiver, Low Pressure manifold, 2 slug catchers, and flare KO drums. SCP, weighing 4600 ton, consists of deck, inlet

and discharger, air cooler, turbo-compressors, suction scrubbers, gas turbine power generator packages. SCP compressed the gas before delivery to Bontang LNG Plant. The project, which took 23 months was awarded in December, 2006 and was completed in February, 2008.

## PTTEP - BONGKOT Quarter Platform South (QPS)



PTT Exploration and Production Plc (PTTEP) awards Gunanusa for the Engineering, Procurement, Construction, Installation, Hook Up and Commissioning of the living Quarter Platform South (QPS)., for the Development Phase 4A of Greater Bongkot South area in December 29th, 2008.

QPS has a 3800 ton topside, with a 1200 ton jacket, which includes living quarters for 160, galley, recreational room, office, helideck, workshop, emergency diesel, fresh water package, and sewage treatment. The water depth is at 78 m. The platform were installed in August, 2011.



PTTEP Bongkot  
Deck Stacking



PTTEP Bongkot  
Ready for Loadout



*selected experience*



# HESS - Ujung Pangkah CPP & AUP

Hess (Ujung Pangkah) awarded Gunanusa the contract for Engineering, Construction, Hook Up and Commissioning of Central Processing Platform (CPP) and Accommodation & Utility Platform (AUP) in October 27th, 2008.

CPP comprises of the Deck module (2000 ton) and Compression Module (650 ton). AUP comprises of the Deck (1600 ton) and Living Quarter (700 ton). The both jacket weight 260 ton with 640 ton piles. The water depth is 10 m. The platforms were installed at Ujung Pangkah, East Java, Indonesia in March, 2011.



selected experience

Hess awarded Gunanusa  
for 5 million man-hours without  
LTI during CPP-AUP Project.





HESS Ujung Pangkah  
Project CPP - Compression  
module load out using  
skidding method

selected experience





# BP TANGGUH GAS PRODUCTION FACILITIES



The BP Indonesia's Tangguh Gas field in Berau Bay in the province Irian Jaya, Indonesia. The natural gas field contains over 500 billion m<sup>3</sup> (17 tcf) of proven natural gas reserves, with estimates of potential reserves reaching over 800 billion m<sup>3</sup> (28 tcf).

Saipem as the main contractor for the project subcontracted Gunanusa to fabricate two Gas Production Facilities (GPF) plat-forms (VR-A and VR-B), each deck weight is 1200 tons, including jackets (1900 tons each) and piles (1300 tons each). The BP Tangguh facilities have a special requirement, 40 years long term corrosion protection accomplished by

coating the structures with Thermally Spray Aluminum (TSA). The project was completed in October, 2006.

## Alstom Astoria Energy Projects Heat Recovery Steam Generators



As part of a project to increase the electricity supply to the City of New York, Alstom power Inc. contracted Gunanusa to fabricate two identical heat steams Recovery Generators (HRSG). Each HRSG will funnel steam from an adjacent Generator and combined the steam to run another generator. Each structure weight is 2500 tons with a 40 m height. Gunanusa completed the project in 8 month and loaded out in April 2005 and shipped around the world to city of New York for finaleam to run another Generator. Gunanusa completed the fabrication ahead of time in April

2005, and loaded to a dockwise vessel for the final trip at Queen, NY.



# PECIKO 6 (EPSC1) LP COMPRESSION PLANT



On September 14th, 2007, Gunanusa was awarded the contract for the Peciko 6 EPSC-1 LP Compression Plant from Total E&P Indonesia as Indonesia's national oil & gas Company.

The scope of project is Detail Engineering, Procurement, Supply, Erection and Construction, Tie-In Work on Site, Precommissioning and Assistance for Commissioning & Start Up of LP Compression Plant

The Peciko 6 (EPSC.1) LP Compression Plant has Production Facilities which consist of

- 2 Turbo Compressors
- Inlet and Discharge Gas Air Coolers
- Suction Scrubber, Fuel Gas Package, Pressure Vessels & Pumps, Open and Close Drains System
- Nitrogen Package



selected experience



# Panamax Container Crane for Tanjung Perak Terminal Surabaya - Indonesia

Manufacturer: KONECRANE

GUNANUSA as fabricator with scope of work Fabrication and Erection of 1 unit Container Crane in 1993.

Gunanusa did procurement for steel, and overall fabrication, machining, erection until complete assembled, include precom, test and commissioning. Machinery house and diesel house fabricated by Gunanusa.

This was semi fully erected and final erected at SITE - Surabaya to lift up Boom and Girder.



selected experience

## Post Panamax Container Crane for Brani Terminal PSA Singapore

Manufacturer : NOELL - German

GUNANUSA as Fabricator with scope of work Fabrication and erection of 6 Units Container Crane in 1992.

Gunanusa did procurement for steel, and overall fabrication, machining, erection until complete assembled, include precom, test and commissioning. Machinery house and diesel house fabricated by Gunanusa.





# Panamax Container Crane for Tanjung Priok Terminal - Jakarta

2 Units Container Cranes Full Manufactured by GUNANUSA with license from PACECO - USA in 1997.

Gunanusa did procurement and overall fabrication, erection, load out and transport, Site Installation, SAT and Commissioning include warranty by Gunanusa.



## Other Container Crane Projects executed by Gunanusa

No	Year	Licence	Gunanusa's Scope of Works
1	1988	Hyundai	2 unit Panamax Container Crane CC and 4 units RTG for Hyundai for Tanjung Priok Terminal-Pelindo 2
			Design and Procurement by Hyundai
			Gunanusa did fabrication, machining, erection until complete assembled, include precom, test and commissioning. Machinery house and diesel house fabricated by Gunanusa
			Transportation using Fork Dockwise big ship.
			Site acceptance test by Hyundai and Gunanusa.
2	1991	NOELL	3 unit Panamax CC for Tanjung Priok Terminal-Pelindo2
			Design and Procurement by NOELL, all equipment by NOELL
			Gunanusa did procurement for steel, and overall fabrication, machining, erection until complete assembled, include precom, test and commissioning. Machinery house and diesel house fabricate by Gunanusa
			Transportation using Fork Dockwise big ship.
			Site acceptance test by NOELL and Gunanusa.
3	1997	Relocation	Gunanusa conduct relocation of CC from Tj Priok Terminal to Lampung Port, South Sumatera and to Ciwandan, Banten.
			The 2(two) CC relocation are Hyundai/Gunanusa product.
			Relocation using Fork Lift Dockwise

selected experience



## PT. Gunanusa Utama Fabricators

Head Office

South Quarter Building, Tower A, 16<sup>th</sup> Floor

Jln. RA Kartini Kav. 8

Jakarta 12430

INDONESIA

Phone : 62-21-570-3329

Fax : 62-21-570-3334, 62-21-570-6810

Email : [bidning@gunanusa.co.id](mailto:bidning@gunanusa.co.id)

Web : [www.gunanusautama.com](http://www.gunanusautama.com)

## Fabrication Yard

Desa Margasari, Kecamatan Pulo Ampel

Kab. Serang - Banten 42455

INDONESIA

Phone : +62-254-575-0088, +62-254-575-0506

Fax : +62-254-575-0091



# **CERTIFICATES**

- ISO 14001:2015
- ISO 9001:2015
- ISO 45001:2015
- Certificates of ASME U, U2, S and PP Stamp
- Certificate of Authorization to Apply the -R- Symbol



# CERTIFICATE



Certificate No. EMS 00079

## SUCOFINDO INTERNATIONAL CERTIFICATION SERVICES

Graha Sucofindo B1 Floor - Jl. Raya Pasar Minggu Kav. 34 Jakarta 12780

Phone : +62-21-7983666 ext. 1021; Fax : +62-21-7987015 / 7987029; Email : cs.sics@sucofindo.co.id

Menyatakan bahwa

*Certify that*

### PT. GUNANUSA UTAMA FABRICATORS

South Quarter Building, Tower A, 16th Floor

Jl. R.A. Kartini Kav. 8, Kec. Cilandak, Jakarta Selatan - INDONESIA

telah menerapkan sistem manajemen lingkungan yang memenuhi  
*has implemented environmental management system that comply with*

### SNI ISO 14001:2015

Environmental Management Systems-Requirements with guidance for use

Ruang lingkup sertifikasi :

*The scope of certification :*

Aspects of Engineering, Procurement, Construction, Installation of Industrial, Oil and Gas Facilities for Offshore and Onshore, Material Handling Unit, Pressure Vessel and Boilers which Impact Environment including Air Pollution, Solid & Liquid Waste Handling.

**SECTOR CODE : 17; 20; 28**

Sertifikat ini berlaku dengan ketentuan bahwa organisasi selalu memenuhi kriteria sebagaimana ditetapkan oleh SUCOFINDO INTERNATIONAL CERTIFICATION SERVICES

*This certificate is valid provided that the organization continues to meet the criteria as laid down by SUCOFINDO INTERNATIONAL CERTIFICATION SERVICES*



**Nurbeta Kurniawan**

Vice President



Sertifikat ini berlaku dari 06 Agustus 2021 sampai 22 Juli 2024

*This certificate is valid from August 06, 2021 until July 22<sup>nd</sup>, 2024*

Sertifikat ini diberikan pertama kali pada 26 Agustus 2008

*This certificate has been granted for the first time on August 26<sup>th</sup>, 2008*



3824555



# Certificate of Approval

This is to certify that the Management System of:

## PT Gunanusa Utama Fabricators

Jl. R.A. Kartini Kav. 8, South Quarter Building, Tower A, 16th Floor, Jakarta Selatan, 12430, Indonesia

has been approved by Lloyd's Register to the following standards:

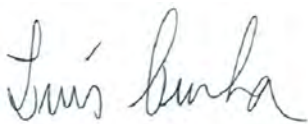
### ISO 9001:2015

Approval number(s): ISO 9001 – 0044954

This certificate is valid only in association with the certificate schedule bearing the same number on which the locations applicable to this approval are listed.

#### The scope of this approval is applicable to:

Engineering, procurement, construction and installation of industrial, oil and gas facilities for offshore and onshore, material handling units, pressure vessel and boilers.



**Luis Cunha**

Area Operations Manager - SAMEA

Issued by: PT. Lloyd's Register Indonesia

for and on behalf of: Lloyd's Register Quality Assurance Limited







# CERTIFICATE



Certificate No. OHS 00024

## SUCOFINDO INTERNATIONAL CERTIFICATION SERVICES

Graha Sucofindo B1 Floor - Jl. Raya Pasar Minggu Kav. 34 Jakarta 12780

Phone : +62-21-7983666 ext. 1021; Fax : +62-21-7987015 / 7987029; Email : cs.sics@sucofindo.co.id

Menyatakan bahwa  
*Certify that*

### PT. GUNANUSA UTAMA FABRICATORS

South Quarter Building, Tower A, 16th Floor

Jl. R.A. Kartini Kav. 8, Kec. Cilandak, Jakarta Selatan - INDONESIA

telah menerapkan sistem manajemen keselamatan & kesehatan kerja yang memenuhi  
*has implemented occupational health and safety management system that comply with*

### ISO 45001:2018

Occupational Health and Safety Management System-Requirements

Ruang lingkup sertifikasi :  
*The scope of certification :*

Engineering, Procurement, Construction and Installation of  
Industrial, Oil and Gas Facilities for Offshore and Onshore,  
Material Handling Units, Pressure Vessel and Boilers.

**SECTOR CODE : 17; 20; 28**

Sertifikat ini berlaku dengan ketentuan bahwa organisasi selalu memenuhi kriteria  
sebagaimana ditetapkan oleh SUCOFINDO INTERNATIONAL CERTIFICATION SERVICES

*This certificate is valid provided that the organization continues to meet the criteria as  
laid down by SUCOFINDO INTERNATIONAL CERTIFICATION SERVICES*

Ir. Triyan Aidilfitri, M.M.

Vice President

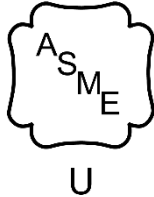
Sertifikat ini berlaku dari 20 Mei 2019 sampai 19 Mei 2022

*This certificate is valid from May 20<sup>th</sup>, 2019 until May 19<sup>th</sup>, 2022*



3242197

SCI-2007A



# CERTIFICATE OF AUTHORIZATION

The named company is authorized by The American Society of Mechanical Engineers (ASME) for the scope of activity shown below in accordance with the applicable rules of the ASME Boiler and Pressure Vessel Code. The use of the ASME Single Certification Mark and the authority granted by this Certificate of Authorization are subject to the provisions of the agreement set forth in the application. Any construction stamped with the ASME Single Certification Mark shall have been built strictly in accordance with the provisions of the ASME Boiler and Pressure Vessel Code.

COMPANY:

**PT. Gunanusa Utama Fabricators**  
**Engineers & Constructors**  
**Desa Margasari, Kec. Puloampel**  
**Kab. Serang.**  
**Province Banten 42455**  
**Indonesia**

SCOPE:

**Manufacture of pressure vessels at the above location and field sites controlled by the above location (This authorization does not cover impregnated graphite)**

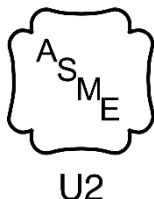
AUTHORIZED: **April 05, 2022**  
 EXPIRES: **October 12, 2024**  
 CERTIFICATE NUMBER: **55728**

Board Chair, Conformity Assessment

Managing Director, Conformity Assessment







# CERTIFICATE OF AUTHORIZATION

The named company is authorized by The American Society of Mechanical Engineers (ASME) for the scope of activity shown below in accordance with the applicable rules of the ASME Boiler and Pressure Vessel Code. The use of the ASME Single Certification Mark and the authority granted by this Certificate of Authorization are subject to the provisions of the agreement set forth in the application. Any construction stamped with the ASME Single Certification Mark shall have been built strictly in accordance with the provisions of the ASME Boiler and Pressure Vessel Code.

**COMPANY:**

**PT. Gunanusa Utama Fabricators  
Engineers & Constructors  
Desa Margasari, Kec. Puloampel  
Kab. Serang.  
Province Banten 42455  
Indonesia**

**SCOPE:**

**Manufacture of Class 1 and Class 2 pressure vessels at the above location and  
field sites controlled by the above location**

**AUTHORIZED: April 5, 2022**  
**EXPIRES: October 12, 2024**  
**CERTIFICATE NUMBER: 55729**

A handwritten signature in black ink, appearing to read 'Rizal D. C. M.', written in a cursive style.

Board Chair, Conformity Assessment

A handwritten signature in black ink, appearing to read 'Paulo', written in a cursive style.

Managing Director, Conformity Assessment



**CUSTOM BONDED FACILITY FOR GUNANUSA YARD**

issued by Ministry of Finance



KEMENTERIAN KEUANGAN REPUBLIK INDONESIA

**SALINAN**

KEPUTUSAN MENTERI KEUANGAN  
NOMOR KM-224/WBC.07/2018

TENTANG

PERUBAHAN ATAS KEPUTUSAN MENTERI KEUANGAN NOMOR 1984/KM.4/2009 TENTANG PENETAPAN TEMPAT SEBAGAI KAWASAN BERIKAT DAN PEMBERIAN IZIN PENYELENGGARA KAWASAN BERIKAT SEKALIGUS IZIN PENGUSAHA KAWASAN BERIKAT KEPADA PT. GUNANUSA UTAMA FABRICATORS YANG BERLOKASI DI DESA MARGASARI, KECAMATAN PULO AMPEL, SERANG, BANTEN SEBAGAIMANA TELAH DIUBAH BEBERAPA KALI TERAKHIR DENGAN KEPUTUSAN MENTERI KEUANGAN NOMOR 638/KM.4/2018

MENTERI KEUANGAN,

- Menimbang : a. bahwa setelah dilakukan penelitian terhadap surat permohonan PT. Gunanusa Utama Fabricators Nomor 429/DIR-PTG/XII/2018 tanggal 12 Desember 2018, diperoleh kesimpulan bahwa permohonan Perubahan Alamat Kantor Perusahaan dan Penambahan Hasil Produksi telah memenuhi persyaratan;
- b. bahwa berdasarkan pertimbangan sebagaimana dimaksud dalam huruf a, perlu menetapkan Keputusan Menteri Keuangan tentang Perubahan Atas Keputusan Menteri Keuangan Nomor 1984/KM.4/2009 Tentang Penetapan Tempat Sebagai Kawasan Berikat Dan Pemberian Izin Penyelenggara Kawasan Berikat Sekaligus Izin Pengusaha Kawasan Berikat Kepada PT. Gunanusa Utama Fabricators Yang Berlokasi Di Desa Margasari, Kecamatan Pulo Ampel, Serang, Banten Sebagaimana Telah Diubah Beberapa Kali Terakhir Dengan Keputusan Menteri Keuangan Nomor 638/KM.4/2018;
- Mengingat : 1. Undang-Undang Nomor 10 Tahun 1995 tentang Kepabeanan (Lembaran Negara Tahun 1995 Nomor 75, Tambahan Lembaran Negara Nomor 3612) sebagaimana telah diubah dengan Undang Undang Nomor 17 Tahun 2006 (Lembaran Negara Republik Indonesia Tahun 2006 Nomor 93, Tambahan Lembaran Negara Indonesia Nomor 4661);
2. Peraturan Pemerintah Nomor 32 Tahun 2009 tentang Tempat Penimbunan Berikat (Lembaran Negara Tahun 2009 Nomor 61, Tambahan Lembaran Negara Nomor 4998) sebagaimana telah diubah dengan Peraturan Pemerintah Nomor 85 Tahun 2015 (Lembaran Negara Republik Indonesia Nomor 279, Tambahan Lembaran Negara Republik Indonesia Nomor 5768);
3. Peraturan Menteri Keuangan Nomor 131/PMK.04/2018 tentang Kawasan Berikat;
4. Peraturan Direktur Jenderal Bea dan Cukai Nomor 19/BC/2018 tentang Tata Laksana Kawasan Berikat;
- Memperhatikan : Berita Acara Pemeriksaan Lokasi Nomor BA-33/WBC.07/BD.03/2018 tanggal 21 Desember 2018

MEMUTUSKAN :

- Menetapkan : KEPUTUSAN MENTERI KEUANGAN REPUBLIK INDONESIA TENTANG PERUBAHAN ATAS KEPUTUSAN MENTERI KEUANGAN NOMOR 1984/KM.4/2009 TENTANG PENETAPAN TEMPAT SEBAGAI KAWASAN BERIKAT DAN PEMBERIAN IZIN PENYELENGGARA KAWASAN BERIKAT

SEKALIGUS IZIN PENGUSAHA KAWASAN BERIKAT KEPADA PT. GUNANUSA UTAMA FABRICATORS YANG BERLOKASI DI DESA MARGASARI, KECAMATAN PULO AMPEL, SERANG, BANTEN SEBAGAIMANA TELAH DIUBAH BEBERAPA KALI TERAKHIR DENGAN KEPUTUSAN MENTERI KEUANGAN NOMOR 638/KM.4/2018

PERTAMA : Mengubah diktum PERTAMA Keputusan Menteri Keuangan Nomor 1984/KM.4/2009, menjadi sebagai berikut:

"Menunjuk dan menetapkan lokasi sebagai Kawasan Berikat dan Pemberian Izin Penyelenggara Kawasan Berikat sekaligus Izin Pengusaha Kawasan Berikat, kepada :

- a. Nama Perusahaan : PT. Gunanusa Utama Fabricators
- b. Alamat Kantor Perusahaan : **South Quarter, Tower A, Lantai 16, Jalan R.A. Kartini kav 8 RT.010/RW.004, Cilandak Barat, Cilandak, Jakarta Selatan, DKI Jakarta 12430**
- c. Nama Pemilik/Penanggung Jawab : Ramli Simatupang
- d. Alamat Pemilik/Penanggung Jawab : Raffles Hills Blok I-6 No. 8, RT/RW 007/025, Desa Sukatani, Kec. Tapos, Depok – Jawa Barat
- e. Tempat/Tanggal Lahir Pemilik/ Penanggung Jawab : Taput, 12 April 1960
- f. Nomor Pokok Wajib Pajak : 01.002.938.7-073.000
- g. Luas Lokasi Kawasan Berikat : 176.559 M<sup>2</sup> dengan batas-batas lokasi:
  - Sebelah Timur : Laut Jawa
  - Sebelah Barat : Jalan Raya Suralaya – Bojonegara
  - Sebelah Utara : Tanah kosong milik masyarakat
  - Sebelah Selatan : PLTG Bojonegara dan PT Cilegon Fabricators
- h. Jenis Hasil Produksi : Boiler, Heat Exchanger, Gas Scrubbers & Knock Out Drums, Pompa Angguk, Glycol Dehydrators, Condensate, Kapal, Accomodation Work Barge, Modules, Offshore Platform Jacket, Wellhead Platform, Production & Processing Platform, Floating Production Storage and Offloading Vessel (FPSO), Floating Production Unit (FPU), Test Separator, **Steel Structure, Infrastruktur, konstruksi Baja Power Plant.**

KEDUA : Penetapan Tempat Sebagai Kawasan Berikat dan Pemberian Izin Penyelenggara Kawasan Berikat Sekaligus Izin Pengusaha Kawasan Berikat sebagaimana dimaksud diktum PERTAMA **berlaku sampai dengan izin Kawasan Berikat dicabut.**



KETIGA : Keputusan Menteri Keuangan ini merupakan bagian yang tidak terpisahkan dari Keputusan Menteri Keuangan Nomor 1984/KM.4/2009 sebagaimana telah diubah terakhir dengan Keputusan Menteri Keuangan Nomor 638/KM.4/2018.

KEEMPAT : Keputusan Menteri Keuangan ini mulai berlaku pada tanggal ditetapkan.

Salinan Keputusan Menteri Keuangan ini disampaikan kepada :

1. Menteri Keuangan;
2. Direktur Jenderal Pajak;
3. Direktur Fasilitas Kepabeanan;
4. Kepala KPPBC Tipe Madya Pabean Merak;
5. Pimpinan PT. Gunanusa Utama Fabricators.

Ditetapkan di Tangerang Selatan  
Pada tanggal 21 Desember 2018

a.n. MENTERI KEUANGAN  
Plh. KEPALA KANTOR WILAYAH DJBC BANTEN

Ttd.

SUDARYANTO

SALINAN sesuai dengan aslinya  
Kabid Fasilitas Kepabeanan dan Cukai

u.b.

Kasi Perijinan dan Fasilitas I

